



NEW

## PolyTitan Resin for LCD DLP SLA 405nm Black 500g

[Read More](#)

**SKU:** 3DWQTS9D2R985

**Price:** 390.00 DH

**Stock:** instock

**Categories:** [Engineering Resins](#), [Functional Resins](#), [Professional Resins](#)

### Product Description

**Polypropylene like 3D printer resin is with 736 J/m impact strength, supper strong and scratch resistance.** Scratch resistance

Great tenacity than polypropylene like

Similar to PP property

Great tactile for part like handle



## 736 J/M Impact Strength

Best high tenacity 3D printing resin. Scratch resistance. Great tenacity than polypropylene like. Similar to PP property. Great tactile for part like handle. Supper strong and scratch resistance.



NEW

## PolyTitan Resin for LCD DLP SLA 405nm Grey 500g

[Read More](#)

**SKU:** 3DWQECK71ZAX1

**Price:** 390.00 DH

**Stock:** instock

**Categories:** [Engineering Resins](#), [Functional Resins](#), [Professional Resins](#)

## Product Description

**Polypropylene like 3D printer resin is with 736 J/m impact strength, supper strong and scratch resistance.** Scratch resistance

Great tenacity than polypropylene like

Similar to PP property

Great tactile for part like handle



## 736 J/M Impact Strength

Best high tenacity 3D printing resin. Scratch resistance. Great tenacity than polypropylene like. Similar to PP property. Great tactile for part like handle. Supper strong and scratch resistance.

---



NEW

## PolyTitan Resin for LCD DLP SLA 405nm White 500g

[Read More](#)

**SKU:** 3DWFJH6T6F1TT

**Price:** 390.00 DH

**Stock:** instock

**Categories:** [Engineering Resins](#), [Functional Resins](#), [Professional Resins](#)

### Product Description

**Polypropylene like 3D printer resin is with 736 J/m impact strength, supper strong and scratch resistance.** Scratch resistance

Great tenacity than polypropylene like

Similar to PP property

Great tactile for part like handle



## 736 J/M Impact Strength

Best high tenacity 3D printing resin. Scratch resistance. Great tenacity than polypropylene like. Similar to PP property. Great tactile for part like handle. Supper strong and scratch resistance.

---



NEW

## SolidEdge Resin for LCD DLP SLA 405nm Grey 1000g

[Read More](#)

**SKU:** 3DWIN56676S60

**Price:** 629.00 DH

**Stock:** instock

**Categories:** [Engineering Resins](#), [Resins](#)

## Product Description

**High-Performance Engineering Resin** Designed for precision, durability, and versatility, our 3D printing resin offers unparalleled properties for industrial and engineering applications.

### Key Features:

- **Drillable & Scratch Resistant:** Ensures long-lasting and robust prints for demanding environments.
- **Low Viscosity & Low Shrinkage:** Achieves high precision and dimensional accuracy in every print.
- **High Strength & Durability:** Exceptional resistance to impact and deformation, suitable for structural testing and prototyping.
- **Excellent Surface Finish:** Produces smooth, detailed prototypes ideal for product design and verification.
- **Anti-Scratch Properties:** Maintains surface integrity even under challenging conditions.

### Applications:

Perfect for:

- Industrial prototyping
- Structural and product testing
- High-precision engineering designs

This resin combines the best of strength, hardness, and scratch resistance, setting a new standard for 3D printing materials. **Precautions:**

1. Fully shaking before usage, shake like up side down will be better.
  2. Please Wear gloves and mask during whole print process to avoid skin contact directly, if you get the resin on your skin unfortunately, please wash with water immediately until clean it up.
  3. Resin is one kind of speical chemisty product, please keep away from children, sunlight shining and dust.
  4. Brush it gently with a soft brush when model complete, and dry it up with cool wind, these steps will let you get the model in better condition
-



NEW

## SolidEdge Resin for LCD DLP SLA 405nm White 1000g

[Read More](#)**SKU:** 3DWTLV815B4D4**Price:** 629.00 DH**Stock:** instock**Categories:** [Engineering Resins](#), [Resins](#)

### Product Description

**High-Performance Engineering Resin** Designed for precision, durability, and versatility, our 3D printing resin offers unparalleled properties for industrial and engineering applications.

#### Key Features:

- **Drillable & Scratch Resistant:** Ensures long-lasting and robust prints for demanding environments.
- **Low Viscosity & Low Shrinkage:** Achieves high precision and dimensional accuracy in every print.
- **High Strength & Durability:** Exceptional resistance to impact and deformation, suitable for structural testing and prototyping.
- **Excellent Surface Finish:** Produces smooth, detailed prototypes ideal for product design and verification.
- **Anti-Scratch Properties:** Maintains surface integrity even under challenging conditions.

#### Applications:

Perfect for:

- Industrial prototyping
- Structural and product testing
- High-precision engineering designs

This resin combines the best of strength, hardness, and scratch resistance, setting a new standard for 3D printing materials. **Precautions:**

1. Fully shaking before usage, shake like up side down will be better.
2. Please Wear gloves and mask during whole print process to avoid skin contact directly, if you get the resin on your skin unfortunately, please wash with water immediately until clean it up.
3. Resin is one kind of speical chemisty product, please keep away from children, sunlight shining and dust.
4. Brush it gently with a soft brush when model complete, and dry it up with cool wind, these steps will let you get the model in better condition



NEW

## SolidEdge Resin for LCD DLP SLA 405nm Black 1000g

[Read More](#)

**SKU:** 3DW9UZR888S09

**Price:** 629.00 DH

**Stock:** instock

**Categories:** [Engineering Resins](#), [Resins](#)

### Product Description

**High-Performance Engineering Resin** Designed for precision, durability, and versatility, our 3D printing resin offers unparalleled properties for industrial and engineering applications.

#### Key Features:

- **Drillable & Scratch Resistant:** Ensures long-lasting and robust prints for demanding environments.
- **Low Viscosity & Low Shrinkage:** Achieves high precision and dimensional accuracy in every print.
- **High Strength & Durability:** Exceptional resistance to impact and deformation, suitable for structural testing and prototyping.
- **Excellent Surface Finish:** Produces smooth, detailed prototypes ideal for product design and verification.



- **Anti-Scratch Properties:** Maintains surface integrity even under challenging conditions.

## Applications:

Perfect for:

- Industrial prototyping
- Structural and product testing
- High-precision engineering designs

This resin combines the best of strength, hardness, and scratch resistance, setting a new standard for 3D printing materials. **Precautions:**

1. Fully shaking before usage, shake like up side down will be better.
2. Please Wear gloves and mask during whole print process to avoid skin contact directly, if you get the resin on your skin unfortunately, please wash with water immediately until clean it up.
3. Resin is one kind of speical chemisty product, please keep away from children, sunlight shining and dust.
4. Brush it gently with a soft brush when model complete, and dry it up with cool wind, these steps will let you get the model in better condition

---

## eSun, PA100 Nylon-Like Resin

[Read More](#)

**SKU:** 3DWJ9HNXPk99A

**Price:** 799.00 DH

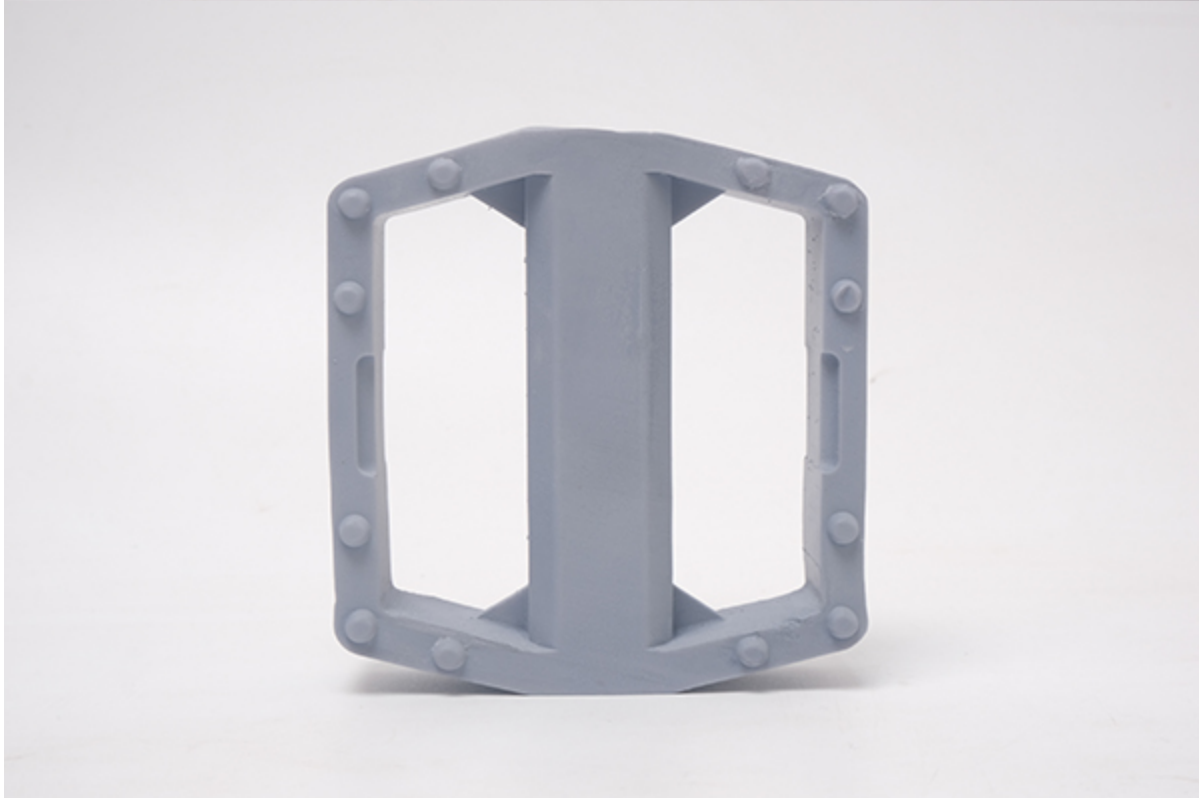
**Stock:** instock

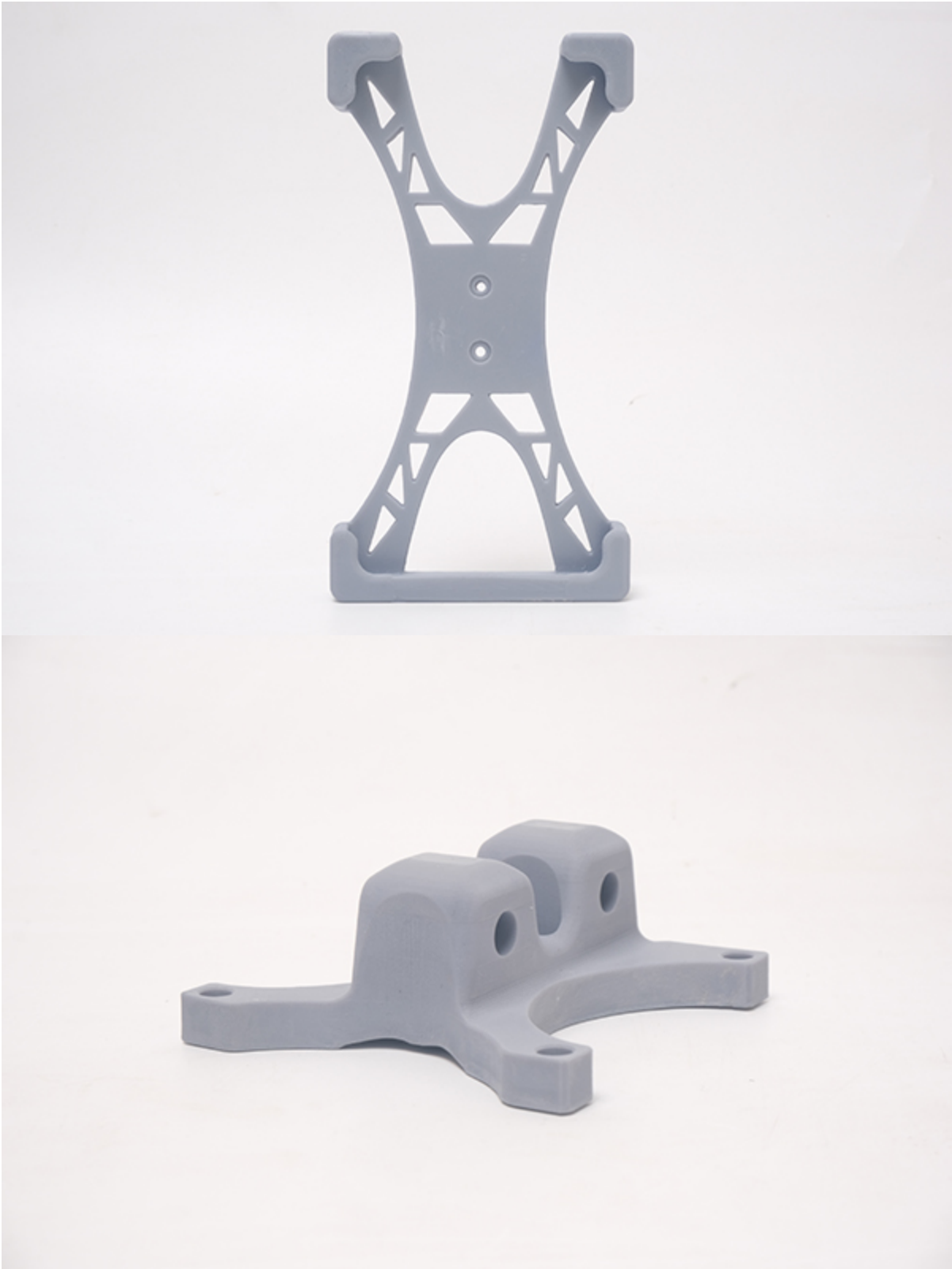
**Categories:** [Engineering Resins](#), [Resins](#)



## Product Description

Nylon-like resin is a high-strength resin material invented by eSUN for engineering and manufacturing applications.







eSUN



## eResin Hard Tough Black 1000ml

[Read More](#)

**SKU:** 3DW1TX13V664A

**Price:** 639.00 DH

**Stock:** instock

**Categories:** [Engineering Resins](#)

### Product Description

## 3D Blend Elastic white Resin 500ml



[Read More](#)

**SKU:** 3DWZ5A8MHJH66

**Price:** 549.00 DH

**Stock:** instock

**Categories:** [Engineering Resins](#), [Functional Resins](#), [Resins](#)

**Tags:** [#dental](#)

### Product Description

---



## 3D Blend High Temperature Mold Resin 500ml

[Read More](#)

**SKU:** 3DWS3Z7MSCO7X

**Price:** 849.00 DH

**Stock:** instock

**Categories:** [Engineering Resins](#), [Resins](#)

**Tags:** [#dental](#)

### Product Description

Weight: 1kg per bottle Density: 1.17 g/cm<sup>3</sup> Viscosity: 160-250 cP Surface Hardness: 80 Shore D  
Tensile Stress at Break: 33 MPa Elongation at Break: 2 % Tensile Modulus: 2749 MPa Notched  
Izod Impact: 20.2 J/m Max Temperature : 220 °C

---



## 3D Blend PolyPropylene Like White 500ml

[Read More](#)

**SKU:** 3DW26416H9L86

**Price:** 559.00 DH

**Stock:** instock

**Categories:** [Engineering Resins](#), [Resins](#)

**Tags:** [#dental](#)

### Product Description

---