

Creality - CR-Scan Raptor



[Read More](#)

SKU: 3DW5233VT66A1

Price: 14,999.00 DH

Stock: onbackorder

Categories: [Scanners](#)

Tags: [#dental](#)

Product Description

Description

Creality 3D Scanner CR-Scan Raptor 3D Printing Handheld Scan Machine 0.02 mm Accuracy 60fps Scanning Speed Hybrid Blue Laser & NIR

Scanning Mode: Blue Light(Blue 7-line laser) / NIR(infrared binocular structured light)

>>Blue Light(Blue 7-line laser) Mode:

Accuracy: Up to 0.02mm @ 100mm [1]

3D Resolution: 0.02-2mm

Scanning Speed: Up to 60fps

Min. scanvolume: 5mm x 5mm x 5mm

Single Capture Range: 270mmx170mm@300mm

Working distance: 150mm-400mm

Color Mapping: Yes

Alignment mode: Marker

>>NIR(infrared binocular structured light) Mode:

Accuracy Up to 0.1mm

3D Resolution 0.1-2mm

Scanning Speed Up to 20fps

Single Capture Range 930mmx580mm@1000mm

Working distance: 170mm-1000mm

Color Mapping: Yes

Alignment mode: Marker / geometry / texture

General Parameters:

3D imaging camera resolution: 1920x1200

Color Supplemental Light: 12 white LEDs

Marker Recognition Enhancement: 12 infrared LEDs

Laser Safety: Class I (eye safe)

Button: Mechanical

IMU: Yes

Output format: OBJ/STL/PLY

Input Power: 12V 2A

Data interface: TypeC/USB3.0

Device Dimensions: 215mmx50mmx74mm

Device Weight: 372g

Calibration board: High-precision glass calibration board

Wireless Scanning: Supported in conjunction with future wireless scanning accessories

System Support Windows/macOS

Operating temperature -10°C to 40°C

Operating humidity: 0-90%RH

Accuracy is evaluated in laboratory conditions (measurement object is 100mm sphere pair) and actual results may be affected by operating environments such as temperature, vibration, and other factors.

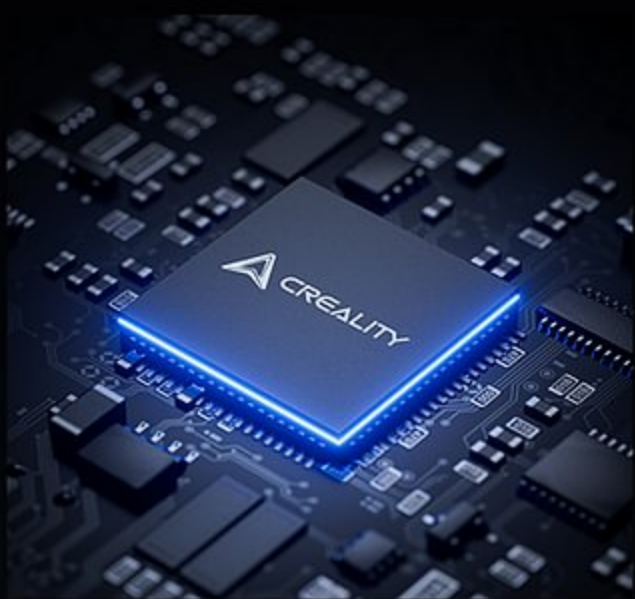
CR-Scan **Raptor**

Hybrid Blue Laser & NIR, Metrology Grade Accuracy



Accurate and Detailed Scanning

Advanced temperature compensation algorithm



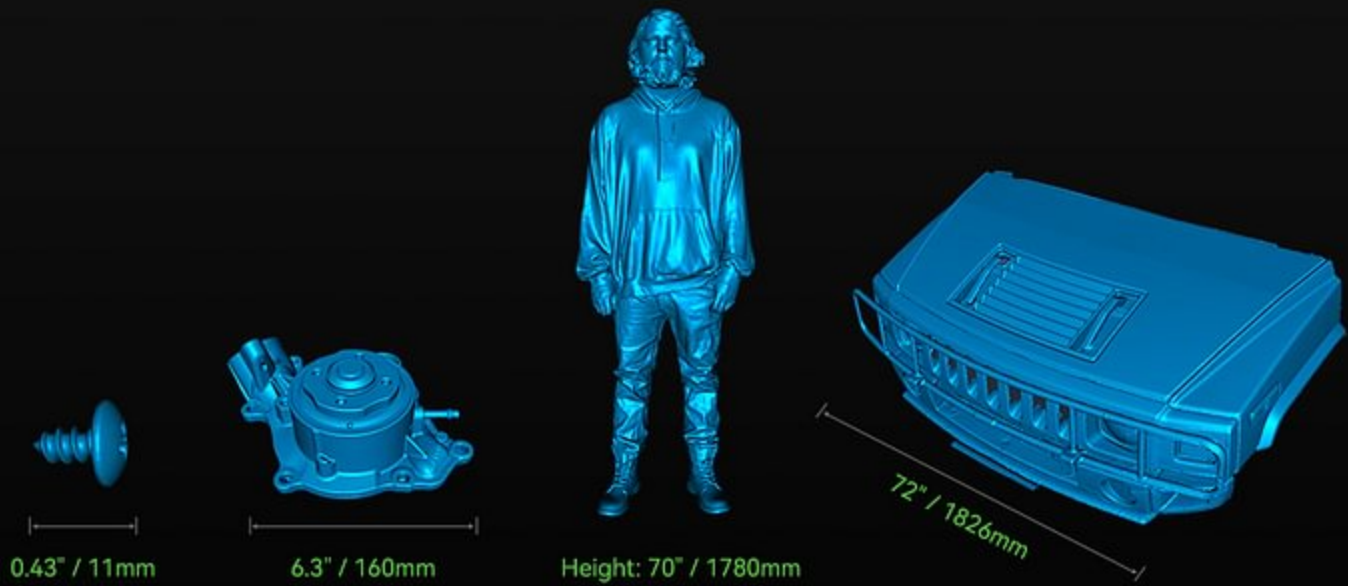
High Performance Structure

- $\phi 20\text{mm}$ large depth of field lens
- Low distortion lens < 5%
- 9-elements glass lens
- Metal lens barrel and holder

Unique Face & Body Algorithm



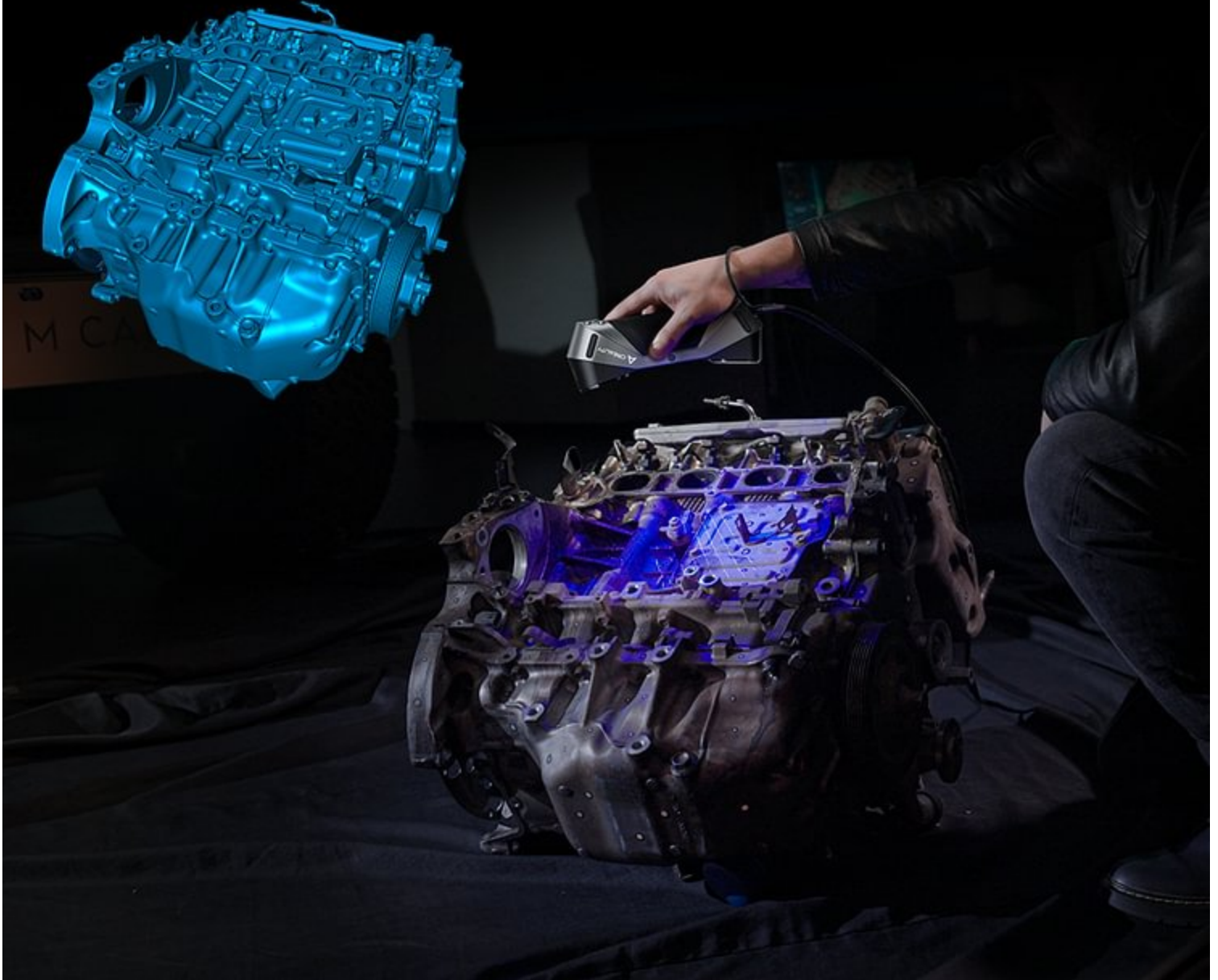
Versatile Scanning for All Sizes



Anti-shaking for Smooth Scanning



Scan Black/Metal Objects without Sprays



24-bit Full-Color Scanning



Peaceful Scanning in Various Environments

Blue Light

Provides supplementary light for laser line scanning.



White Light

Used to enhance the brightness of color textures.

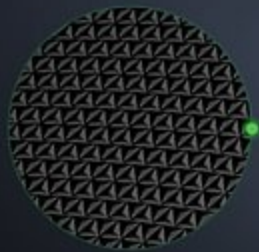


Intuitive Experience



Lightweight and Portable, One-hand Control

Lightweight 372g



Anti-slip sleeve

Detachable lanyard



High Precision Glass Calibration Board

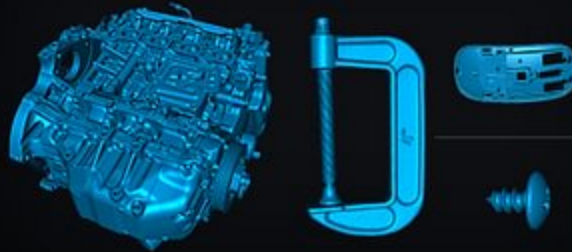


See Raptor's Wide Applications

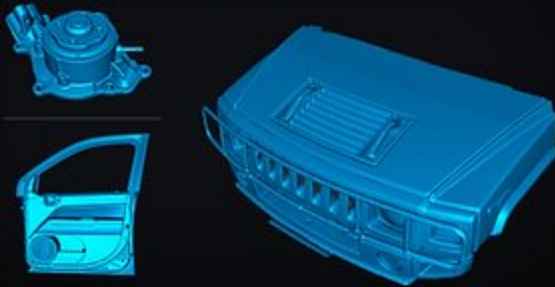
Metrology Grade Inspection



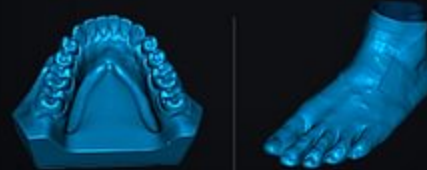
Reverse Engineering



Auto Parts



Medical



Mold Manufacturing



Action Figure



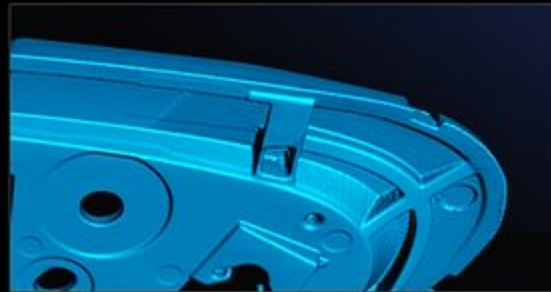
AR / VR



7 Laser Lines Metrology Grade Accuracy



2.3 Million Pixel



High-speed Scanning Beyond Your Imagination



Infrared Structured Light Scanning

