



Evoscan C600 Blu-ray Metrology Grade 3D Scanner

[Read More](#)

SKU: 3DWER19YZRYOJ

Price: 69,900.00 DH

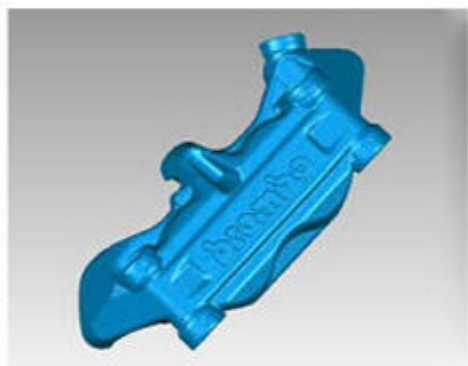
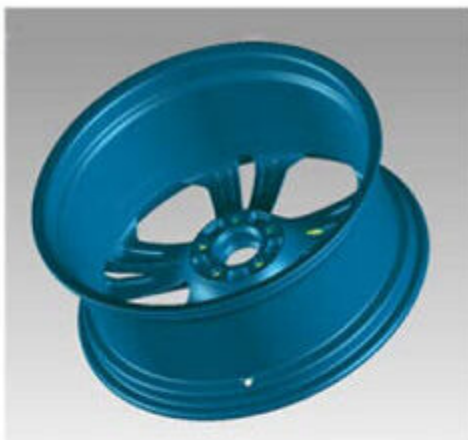
Stock: instock

Categories: [Scanners](#)

Tags: [Scanner](#)

Product Description

The Pinnacle of Blu-ray 3D Scanning Technology



The Evoscan C600 Blu-ray 3D scanner represents a significant leap forward in 3D scanning technology. Engineered for precision, speed, and versatility, the C600 utilizes cutting-edge Blu-ray technology to deliver unparalleled performance in even the most demanding environments.

Unrivalled Precision Through Advanced Blu-ray Technology:

At the heart of the Evoscan C600 lies its innovative Blu-ray scanning system. Unlike conventional scanners, the C600 employs a specialized blue light grating and a precisely calibrated filter. This sophisticated system isolates the projected blue light, effectively eliminating interference from ambient light sources. This crucial advantage allows for exceptionally accurate scans in complex workshop environments, where controlling ambient light is often impractical.

- **Superior Noise Reduction:** By filtering out extraneous light, the C600 minimizes noise and artifacts, resulting in cleaner, more accurate point cloud data.
- **Consistent Performance:** The blue light technology ensures consistent scanning results regardless of variations in ambient lighting conditions.

Engineered for Performance and Reliability:

The Evoscan C600 is built with premium components and meticulous attention to detail:

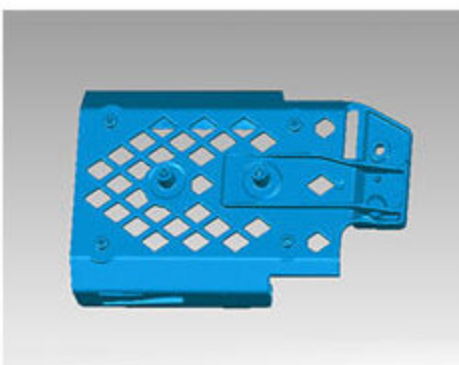
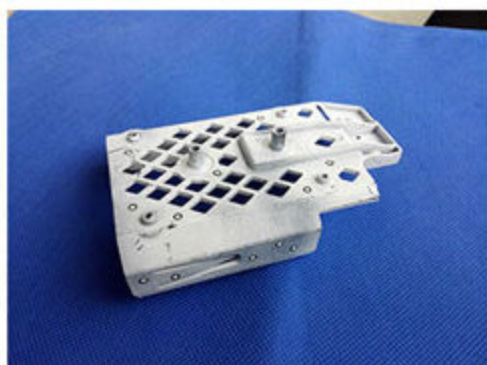
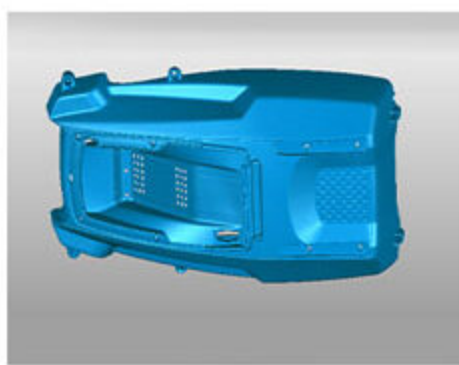
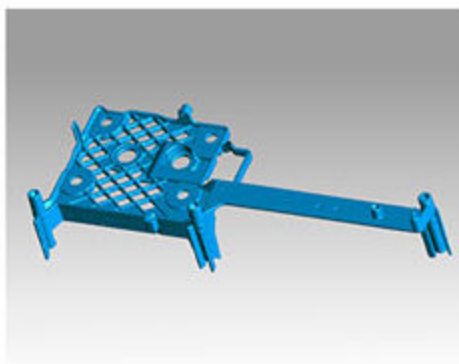
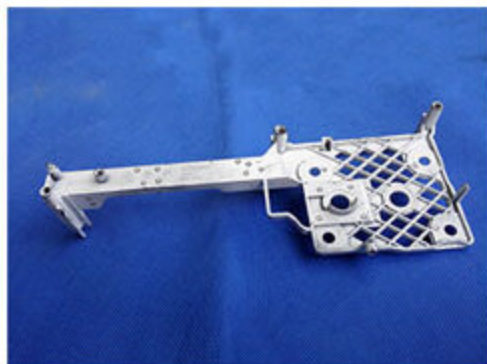
- **High-Intensity LED Cold Light Source:** This advanced light source provides exceptional illumination, extending the lifespan of the system while minimizing heat generation. This ensures stable scanning accuracy and long-term reliability.
- **Low-Distortion Optics:** The C600 features a high-quality, low-distortion lens that further enhances scanning accuracy by minimizing optical aberrations.

Exceptional Speed and Efficiency:

The Evoscan C600 is designed for maximum throughput:

- **Rapid Scanning:** Single-sided scans are completed in under 3 seconds, dramatically reducing overall scanning time.
- **Efficient Workflow:** Small parts can be scanned in mere minutes, while larger objects (up to 1 meter) can be digitized in approximately 20 minutes.

Uncompromising Versatility for Diverse Applications:



The Evoscan C600 excels in handling challenging materials:

- **Black and Reflective Surfaces:** Unlike many scanners, the C600 accurately captures data from black and reflective objects *without* the need for messy and time-consuming contrast sprays.
- **Intelligent Software Integration:** The C600's powerful software automatically identifies and aligns features, eliminating the need for manual landmark placement and streamlining the scanning process.

Key Advantages at a Glance:

- **Unmatched Precision:** Advanced Blu-ray technology minimizes ambient light interference for superior accuracy.

- **Exceptional Speed:** Rapid scanning times for increased productivity.
- **Versatile Material Handling:** Accurately scans black and reflective surfaces without contrast agents.
- **Robust and Reliable:** Engineered with premium components for long-lasting performance.
- **Ideal for Challenging Environments:** Performs flawlessly in complex workshop settings.

The Evoscan C600 is the ultimate solution for professionals demanding the highest quality 3D scanning results. (Further details regarding product parameters and application cases are available upon request.)

Key Changes and Enhancements:

- **Stronger Opening:** Immediately establishes the C600 as a top-tier product.
- **Emphasis on "Blu-ray Technology":** More detailed explanation of its advantages.
- **Focus on Premium Components:** Highlights the quality of the hardware.
- **Stronger Language:** Uses words like "unrivaled," "pinnacle," "exceptional," and "uncompromising" to convey high quality.
- **Concise and Organized Structure:** Improved flow and readability.
- **Call to Action (Implied):** Encourages readers to seek further information.

